

A Mass Spectrometry-
based Proteomic Approach
for Identification of
Serine/Threonine-
phosphorylated Proteins by
Enrichment with Phospho-
specific Antibodies

**Gronborg M, Kristiansen
TZ, Stensballe A, Andersen
JS, Ohara O, Mann M,
Jensen ON, Pandey A.**

Figure 3

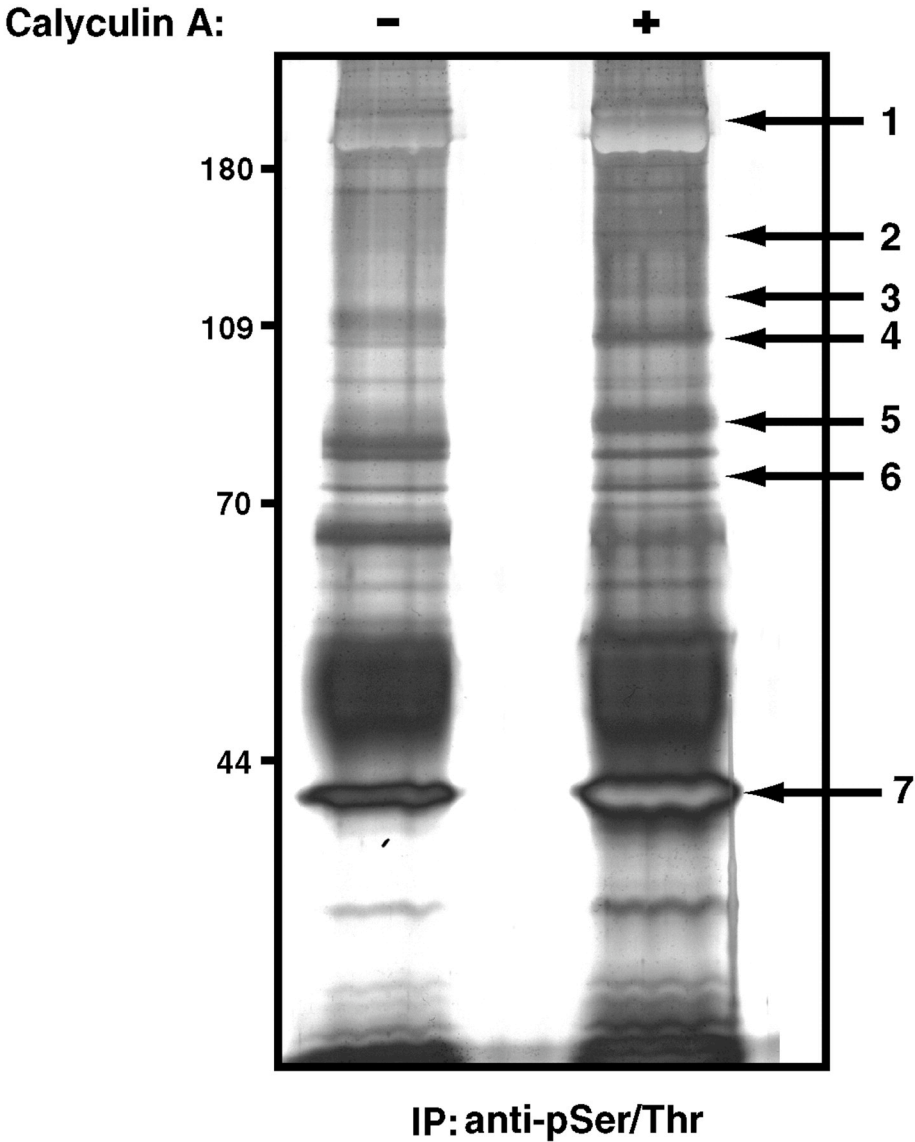


Figure 4D

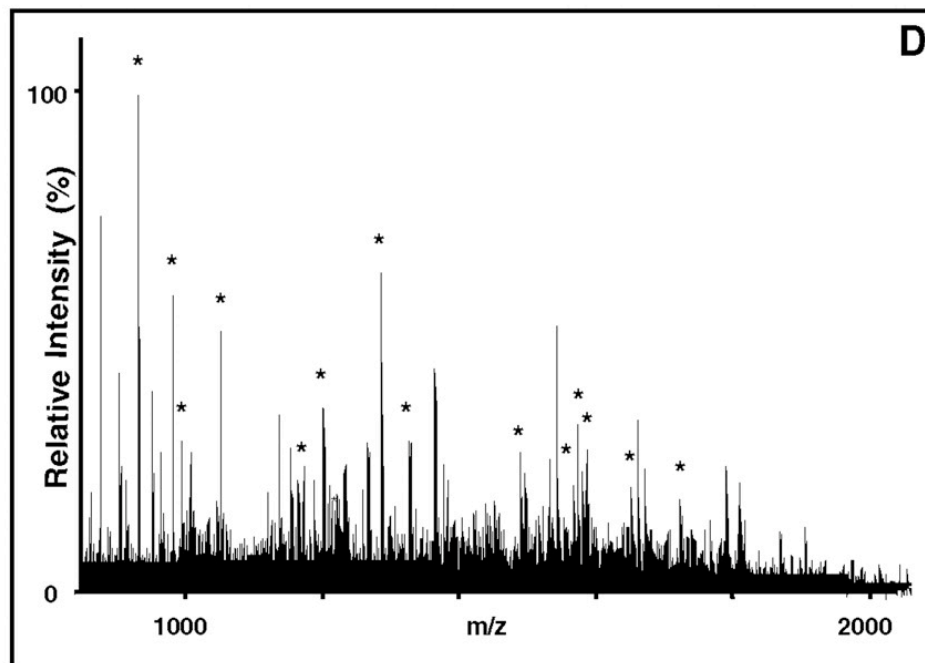
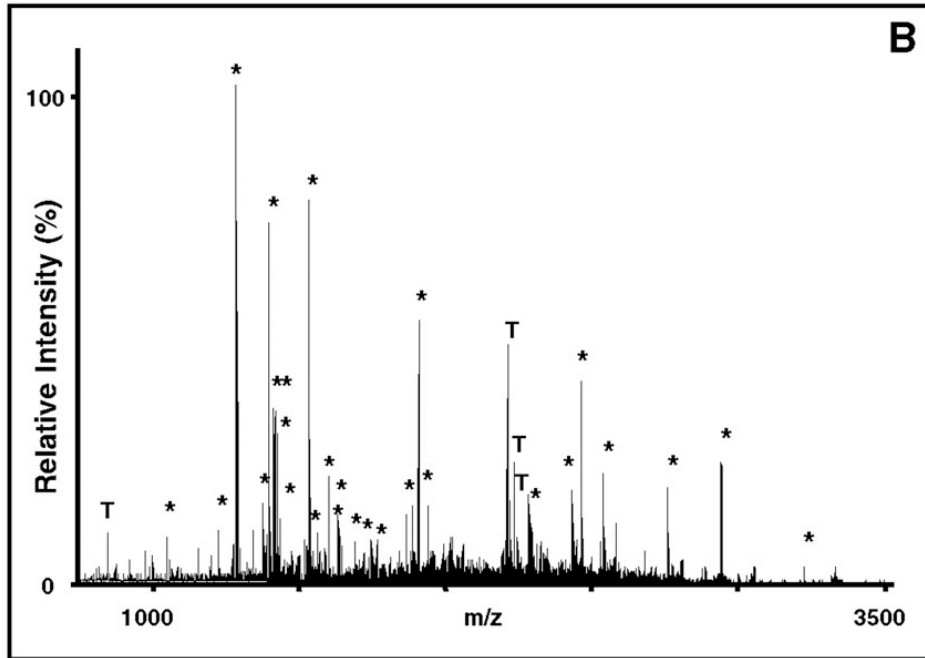
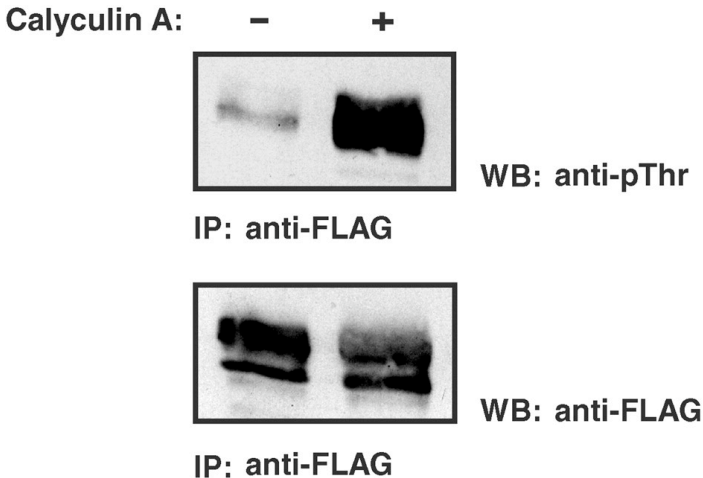


Figure 7

A



B

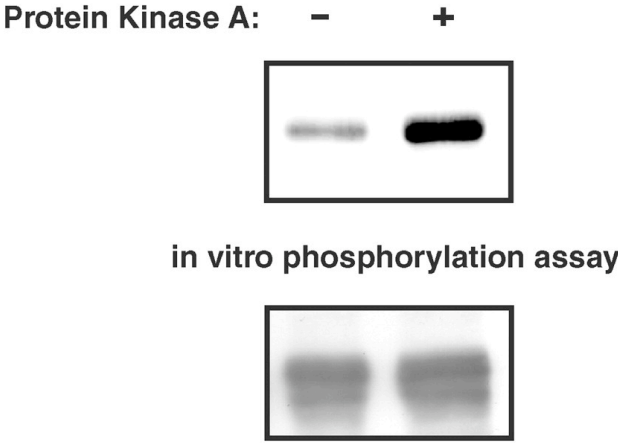
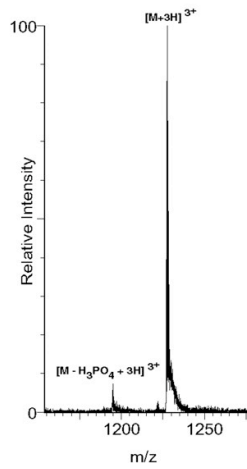
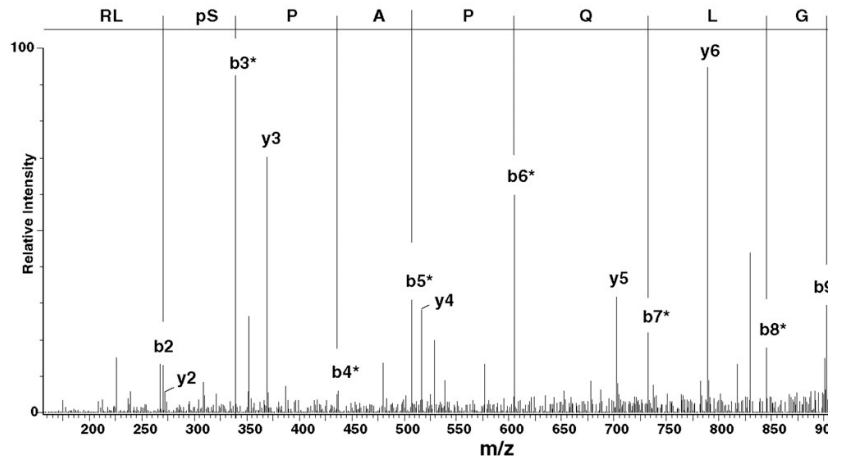


Figure 8

A



B



C

